

Minutes – 4 March 2021

Boral – Petrie Quarry Liaison Group Meeting

ATTENDEES

Community Representatives

- Steven Wighton, Neighbour
- Greg Dunlop, Neighbour
- George and Del Down
- David Dwyer

Boral

- Elke Stapf, Stakeholder Manager - BLPG Northern Region (Chair)
- David Mitchell, Quarry Manager Petrie

APOLOGIES

- Shane King MP, Member for Kurwongbah
- Cr Darren Grimwade, Division 11, MBRC
- Vanda Grabowski, Koala Action Inc
- DES ESComplianceBrisbaneMoreton@des.qld.gov.au
- Jessica Van Soest, Environmental Manager Qld
- Andrew Lyndon, Planning & Development Manager, BPG (QLD)

Meeting started at 4.35pm

Apologies - See list above

• Happy Birthday Boral

We celebrated 75 years in Business - with our neighbours and community representative, cutting cake with our long-standing members of our Petrie Quarry Liaison Group meeting. Elke presented Boral's historical details:

- On 4 March 1946, Bitumen and Oil Refineries Australia Limited was incorporated, six months after the official end of World War II.
- David Craig, Boral's founder, led the push to create bitumen and oil-based products for the Australian market.
- By the late 1960's Boral had expanded into building and construction materials, and
- Boral first branched out overseas in the early 1980's.
- Today, Boral is one of Australia's largest building and construction materials suppliers with significant operations in the USA and Asia, employing around 15,000 employees.

• 2020 State Elections (Saturday, 31 October 2020)

Elke passed on our congratulations to Shane King, Member for Kurwongbah, on his re-election. We wish him well on his next 4-year reign.



Action items (last meeting 9 July 2021)

Update on:

Update on Quarry Operation

David Mitchell provided an operational update:

Our concentration is still between RL76 and RL112; RL124 has now been removed and the works are moving lower into the pit. Greg Dunlop said he could hear drilling works but could not establish if it was Boral or the neighbouring quarry. Dave Mitchell explained that both businesses are drilling, but we are now moving lower into the pit, extracting on the northern side of the pit, which should reduce noise impacts on neighbours from Boral's quarry. Dave pointed out the different stages of the quarry works on a map, explaining the direction the quarry is moving towards in the next 30 years. We need to revise the map to the latest status for the next meeting. George Down asked – out of interest - could we provide the actual size of the quarry and landholdings.

While fire trail maintenance is ongoing, Dave Mitchell investigated which fire service is responsible for the Petrie region. Dave contact Queensland Fire & Emergency Services regarding a possible fuel reduction burn during the autumn/winter period. We will keep everyone informed before any burns.

Blasting

We conducted 6 blasts since our last meeting in June 2020. David Mitchell reported on the latest blasting results for the period 'July 2020 to Feb 2021'. All blasting results were within our approval limits.

Overpressure and vibration were mostly low and within approval limits due to amended blast plan.

Petrie Quarry approval limits:

Overpressure

must not exceed 120dB(L) for all blasts

must not exceed 115dB(L) for 9 out of 10 blasts

Petrie Quarry approval limits:	
Overpressure:	
-	must not exceed 120dB(L) for all blasts
-	must not exceed 115dB(L) for 9 out of 10 blasts
Vibration:	
-	must not exceed 10mm/s for all blasts
-	must not exceed 5mm/s for 9 out of 10 blasts

Del Down mentioned she can hear and feel the blasting from her residence. She asked what the influencers of the blasting process are?

Dave explained – we are monitoring favourable conditions with influencing factors such as:

- Weather conditions (we avoid dense cloud cover or heavy rain fall if possible)
- Wind direction (best if wind direction points away from neighbours)
- Blast design (ongoing improvement program)

The best conditions for blasting are a clear still day with a perfect blast process on the day.

Dust monitoring

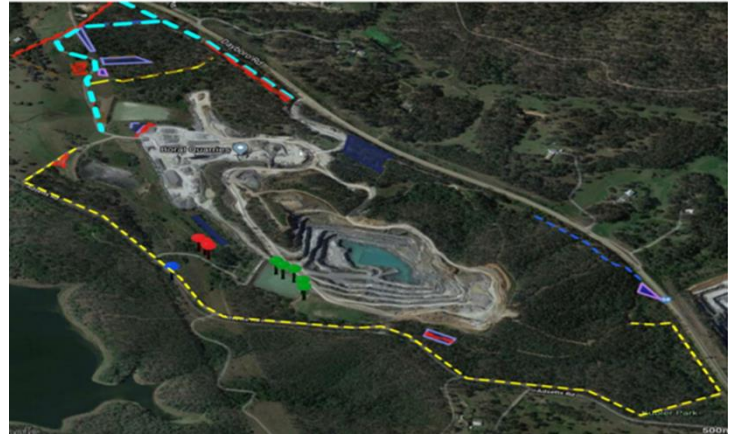
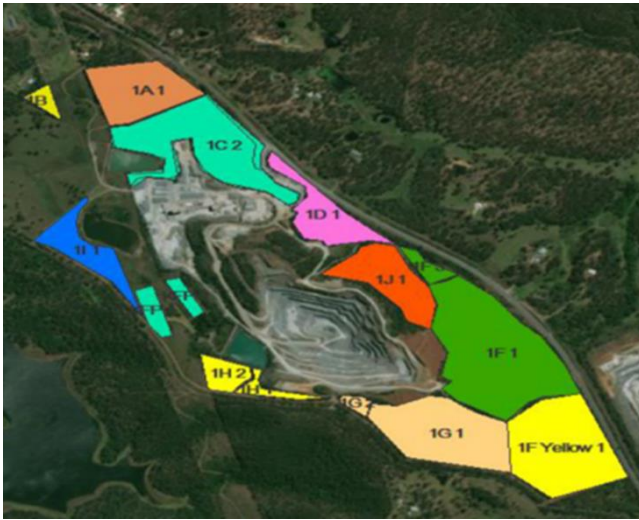
Dust results for the period June 2020 to January 2021 were generally low near neighbours, except for a slightly increase at M2 in December 2020 near the Dunlop's property (63 out of 120), due to high combustible matter in the specimen (can be burnt) the results are related to grasses, leaves, etc). Greg Dunlop could not remember any issues in December, but he could have been mowing. We have not received any community complaints during this period.

Petrie Quarry approval limits:	
Total insoluble matter 120 mg/m ² /day - consistent of ash content (related to the quarry) and combustible content (organic matter i.e. grasses)	
Combustible matter = organic material which may include grass, topsoil, bird droppings etc	
Ash Content = minerals that don't burn (i.e. quarry materials, road matter)	
Soluble Matter = dissolvable i.e. sulphates, sea salt (determined through a filtration process)	
Insoluble = rock, organic matter (won't dissolve. This component is combusted in a furnace to determine the ash content and combustible matter)	

Rehabilitation

Elke and Dave reported on recent weed management works for the period July 2020 to Feb 2021. We are in the maintenance phase rather than planting due to the dry weather in this period. Our contractor 'Spectrum' maintained & enhanced the site buffer.

Elke presented a map showing tracks and rehab areas that have been slashed and sprayed.



Area 1A

Spraying along fence line and access track to reduce the fuel load (to create a fire break)
Cut and pasting of woody weeds including Devils Fig and Lantana.

Area 1C

Removal of tree guards and stakes around the seedlings; weeding and brush cutting around seedlings; removal of woody weeds (Guava, Lantana camara, Ochna, Devils Fig and Tobacco), and spraying along access track to reduce the fuel load.

Area 1E

Removal of woody weeds (devils fig, tobacco, lantana and archer vine); brush cutting and slashing of weeds and grasses; removal of tree guards and stakes from seedlings.



Koala Culvert (along Dayboro Road) was slashed

Community Project

Boral provided quarry materials to stabilise the boat ramp at Samsonvale Dam for Pine Rivers Fish Management Association. Steven Wighton thanked Boral on behalf of PRFMA, they are appreciative of Boral's support.

Current Community Issues

- No community issues were received since our last meeting in July 2020.
- Discussions were held about a recent gun shot in the area, but nothing came of it.
- Greg Dunlop inquired about the outcome of the recent break in at the quarry. The purputrators are looking for tools that they can sell on the internet. Police forensics came on site to conduct an investigation. No outcomes at this time. Boral has installed improvements to the fencing at the main gate and installed a camera for surveillance.
- We discussed sightings of deer in the area, but the low number of animals do not cause any issues at present.

David Dwyer mentioned seeing trucks parking on Dayboro Road early in the morning before allowed into the quarry. Dave Mitchell said he checks the road on a regular basis to ensure trucks visiting Boral refrain from the practice.

Elke to pass feedback onto Boral Logistics to include Petrie in their future ad-hoc checks.

Meeting closed: 5.35pm

Next Meeting: 23 September 2021, 4.30pm, Venue: TBA

ACTION ITEMS:		
Name:	Task:	Actioned by:
Quarry Manager / Elke Stapf	<ul style="list-style-type: none"> - Update on Quarry Operation. - Provide a revised (latest) map for operational updates and RL's. Gather information on the size of the quarry and landholdings. Show areal - history of plantings (1992-2021) 	Next meeting
Jessica Van Soest / Matt Allan	<ul style="list-style-type: none"> - Report on dust & blast results - Update on rehabilitation works 	Next meeting
Elke Stapf	<ul style="list-style-type: none"> - Show before & after photos of site (massive increase of trees planted since the beginning of the quarry) 	
Elke Stapf	<ul style="list-style-type: none"> - Update on Community matters and projects 	Next meeting

Contact Details: Petrie Quarry, 788 Dayboro Road, Whiteside Qld 4503, Ph (07) 3330-3554 or feedback_NR@boral.com.au; Elke Stapf 3867 7470

Current Quarry Operating Hours:

Mon-Fri 7am-6pm

Sat 6am to 12noon (approval to 2pm – however mainly used for maintenance only);

Closed on Sundays and Public Holidays.