

Minutes – 9 July 2020

Boral – Petrie Quarry Liaison Group Meeting

ATTENDEES

Community Representatives

- Steven Wighton, Neighbour
- Greg Dunlop, Neighbour

Boral

- Elke Stapf, Stakeholder Manager - BLPG Northern Region (Chair)
- David Mitchell, Quarry Manager Petrie

APOLOGIES

- Shane King MP, Member for Kurwongbah
- Cr Darren Grimwade, Division 11, MBRC
- George and Del Down, Neighbours
- David Dwyer, Community Representative
- Vanda Grabowski, Koala Action Inc
- DES ESComplianceBrisbaneMoreton@des.qld.gov.au
- Jessica Van Soest, Environmental Manager Qld
- Andrew Lyndon, Planning & Development Manager, BPG (QLD)

Because of COVID-19 we had originally offered the online option to participate in the meeting via Google Meet, however due to change of venue at the quarry site (The Heritage Museum was unavailable due to Covid-19) we experienced technical issues (no Wi-Fi in the crib room at the quarry), hence this option was no longer available on the day. As I was unaware of anyone trying to use the online option, unfortunately no notifications were sent out regarding our technical difficulties.

The majority of the Petrie Quarry Liaison Group Members prefer face-to-face meetings, and as I am unable to guarantee Wi-Fi connection at various meeting venues, we will continue to meet face-to-face, without the online option. However, all members will receive minutes and are welcome to send questions via email or call me directly. Contact details are below – page 4.

Meeting started at 4.35pm

Apologies were read out - See list above

Unfortunately, last minute cancellations, traffic issues, and failed online option reduced the number of attendees for this meeting.

Action items of last meeting

Update on Quarry Operation

David Mitchell provided an operational update:

Operational works concentration in the pit is now between RL76 and RL112. We are moving lower into the pit, which will reduce the impact on our neighbours. Greg Dunlop said he could hear the works a few month ago, but has no issues.

We have fire breaks installed on site to ensure the safety for our immediate neighbours, and we are currently speaking with the Rural Fire Brigade on any actions required for a possible fuel reduction burn in the near future to take advantage of the winter season. Neighbours will be notified of any burns before they occur. It was established that Petrie Fire and Rescue is the responsible party for the area where our quarry is located, however the Narangba Rural Fire Brigade is assisting at the moment.

Blasting

David Mitchell reported on the latest blasting results for November 2019 to June 2020. All blasting results were within our approval limits. Overpressure and vibration was mostly low and within approval limits due to amended blast plan.

On 14 January 2020, a community member inquired about the blast, concerned it was stronger than previously experienced. The blast was compliant, however a strong SE wind with low cloud cover elevated the overpressure that the neighbour could feel, although the vibrations was low. The attending members had no issues with blasting during this period.

Petrie Quarry approval limits:

Overpressure:

- must not exceed 120dB(L) for all blasts
- must not exceed 115dB(L) for 9 out of 10 blasts

Vibration:

- must not exceed 10mm/s for all blasts
- must not exceed 5mm/s for 9 out of 10 blasts

Dust monitoring

Dust results for the period November 2019 to May 2020 were generally low near neighbours, except for March 2020 at M2 near the Dunlop's property. Boral reported the result to DES, after an investigation it was determined the total Insoluble Matter in the specimen was mainly grasses, leaves, etc 166(mg/m2/day); Greg Dunlop told us that the fire breaks on the SEQ Water property along the fence are being mowed regularly, which is near the monitor M2; DES closed investigation. The wind direction was variable. We have not received any community complaints during this period.

Petrie Quarry approval limits:

Total insoluble matter 120 mg/m2/day - consistent of ash content (related to the quarry) and combustible content (organic matter i.e. grasses)

Combustible matter = organic material which may include grass, topsoil, bird droppings etc

Ash Content = minerals that don't burn (i.e. quarry materials, road matter)

Soluble Matter = dissolvable ie. sulphates, sea salt (determined through a filtration process)

Insoluble = rock, organic matter (won't dissolve. This component is combusted in a furnace to determine the ash content and combustible matter)

Rehabilitation

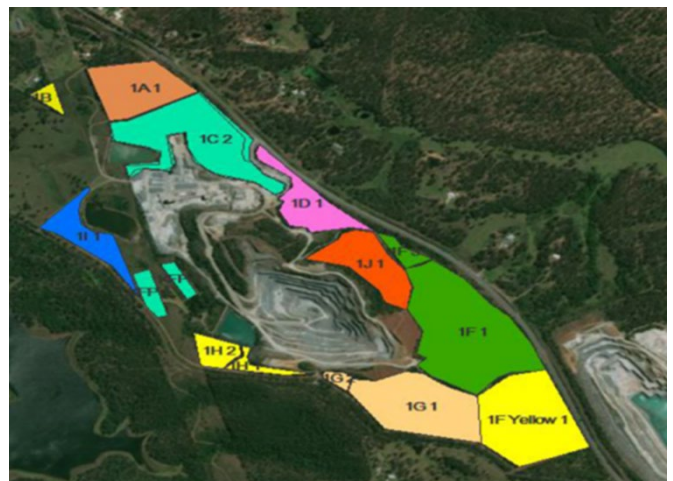
Area 1C

- completed brush cutting and spraying in the majority of rehab area, ready to have the guards removed from plants; fire breaks have been slashed and sprayed adjacent to private property.

Area 1E

- been slashed, woody weed cut down, and sprayed; last year installed koala crossing poles (10) on Adsetts Rd to assist with mobility in and out of the site. 6 koalas were recorded on site last year.

Elke presented photos representing works before and after weeding.



We installed a series of koala movement structures along the Boral boundary fence adjacent to Adsetts Rd:

1I, 1H and 1J

- Koala culvert weed controlled and rehabilitated to assist with Koala movement
- A camera was set up to determine the short- and long-term fauna movement through the culvert; a medium level of koala activity has been recorded
- Wooden posts were installed - either side of the fence with an adjoining top section, allows for safe fauna movement and fauna refuge from predators.



Photo 2: Koala Movement Fences, 10 Installed on Adsetts Road all allow for increased Koala Movement into and out of the site



Future works include:

Stage 1

Weed control of restricted invasive weeds grown back across all stage 1 rehab area:

- in the koala culvert planting area and some replanting;
- in the koala fodder area;
- in the old koala fodder area, which is being converted to a rehabilitation zone.

Stage 2

- Weed control in planting areas;
- Continue to work on fire breaks for entire site.

Community Event

The fishing day planned in early 2020 on site was cancelled, but is to be rescheduled to later in the year. Boral provided rock for the landing at Lake Samsonvale in support of the Pine Rivers Fish Management Association.

Current Community Issues

Since our last meeting held in Nov 2019:

28 November 2019

Member of the public informed us of some gravel on the road outside the gate at the quarry. An investigation found a few shovels of 20mm. Weighbridge operator engaged the street sweeper to clean up.

May 2020

A neighbour informed us of a stranger wanting to sell bitumen for driveways in the area, claiming he was in possession of leftover materials from nearby roadworks (he stated: Graham Road - State Government job) and it would be therefore sold for a good price. The stranger claimed the equipment to place the bitumen is kept at the Boral Petrie quarry. When the neighbour asked if the stranger knew where the quarry was located, he declined and said he was not across all the detail. The stranger identified himself as Jack Brown but was unable to provide a business card. He said he would return, which did not occur. He was wearing a yellow safety shirt (no company logo), and he drove a black ute with a tray.

Current Local Matters

2020 Queensland Elections

The Local Government Elections were held on Saturday, 28 March 2020
Cr Darren Grimwade, was re-elected as Councillor for Division 11 Moreton Bay Regional Council.
We sent our congratulations.

The Queensland State Election will be held on Saturday, 31 October 2020
We wish Shane King MP all the best for the election.

Current Boral Matters

From 1 July 2020, Boral welcomed a new CEO and Managing Director, Zlatko Todorovski.
Zlatko was born in Macedonia (Balkan Peninsula) in Southeast Europe, and grew up in Wollongong NSW, where he attended the University of Wollongong.

His focus:

- Internal: safety and all operational aspects including innovation and sustainability
- External: customers, community, and our licence to operate.

A culturally and experientially diverse global executive with more than 30 years expertise in the oil and gas, logistics, building and construction materials and manufacturing sectors. Has lived in Australia, United Kingdom and United States and worked extensively in Asia, Middle East, Africa, Russia and Latin America. He has a strong background in corporate strategy and planning, originating and executing M&A and strategic procurement. Direct experience of leading major transformations (including turn-arounds) and driving growth. Deep finance expertise across capital markets, investor relations, accounting and tax combined with a strong corporate governance mindset.

Meeting closed: 5.55pm

Next Meeting: 2020 TBA

ACTION ITEMS:		
Name:	Task:	Actioned by:
Quarry Manager	- Update on Quarry Operation.	Next meeting
Jessica Van Soest / Matt Allan	- Update on rehabilitation works; - Report dust & blast results	Next meeting
Elke Stapf	- Update on Community matters and projects	Next meeting

Contact Details: Petrie Quarry, 788 Dayboro Road, Whiteside Qld 4503, Ph (07) 3330-3554 or [feedback NR@boral.com.au](mailto:feedback_NR@boral.com.au); [Elke Stapf 3867 7470](tel:38677470)

Current Quarry Operating Hours:

Mon-Fri 7am-6pm

Sat 6am to 12noon (approval to 2pm – however mainly used for maintenance only);

Closed on Sundays and Public Holidays.